

Council Report

April 4, 2022

Chief Copeland

Manager

- The new Village website launched on Tuesday, March 22nd. We are still making updates and working out a few issues, but it is up for review. A few people have commented that it looks much better than the old website. I have included a photo that is on the webpage. The website can be observed at: villageofwaynesville.org.



- AE Door and Windows have completed the first garage door. They are waiting for a backordered part for the other door. They advised that the part should be in within the next few weeks, so they can complete the project.



- I have provided a copy of a survey compiled by the City of Piqua utility department for your review. Jamie provided the 2022 Village water and sewer rates, and the graph reflects where the Village fares. As observed our rates are between the low to medium cost on the scale. According to the rates provided, the Village rates are the 9th lowest out of 64 municipalities in the area that participated. In addition, the EPA has advised us over the years that the Village has some of the best quality water in the State.
- I am currently getting quotes to construct cement bins at the Village Maintenance facility for storing materials used on street repairs and water breaks. This will help speed up repairs and cut down on transportation of material costs. I appropriated money in the 2022 budget for this project. This topic will be discussed at the April 4th Public Works meeting.



The photos above are the Village current stock pile of various stone.



The photos above are Hamilton Township's organized stock of various stone, sand and mulch.

- The Council will be voting on an ordinance which is a collaborative agreement with Wayne Township for OPWC 2023 grant program. This is the Franklin Street and Third Street waterline and street replacement project. The Ohio Public Works Commission will pay 70% of the project and the Village will be required to pay the remaining 30% minus the \$25,000.00 from Wayne Township if they approve the multi-jurisdictional agreement. The Township's contribution will pay for new fire hydrants on Franklin Street and Third Street.
- I will be discussing the purchase of an incline-vac utility excavator for the Water Department at the Public Works meeting. We budgeted \$45,000.00 for a valve exercising machine in the 2022 appropriations. The piece of equipment shown below is a better machine that does a lot more functions that would be very useful to the Village. The piece of equipment will exercise and clean valves and meter boxes. The cost is \$73,145.00 and qualifies to be purchased with American Rescue Plan grant money. In addition, we are submitting a grant application with the Ohio Environment Protection Agency (EPA). We are trying to get 3 quotes and if approved by Public Works, an ordinance will be prepared for the next Council meeting.



- Council will be voting on a Rumpke renewal contract. I spoke with Dean Ferrier the Municipal / Public Sector representative. He advised that the increase in fuel prices and labor has caused a substantial increase in everyone's rates and the contract presented is the best they can offer.

- The Maintenance Department has been using the leaf vac to clear the curbs and storm basins throughout the Village as seen in the photos below.



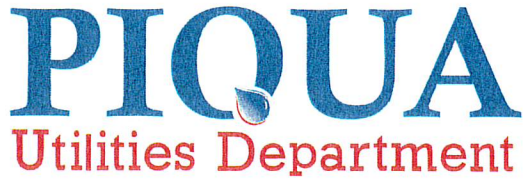
- The Main Street Lights project was discussed at the Finance / Light Committee meeting. I believe it was decided to move forward on the restoration project by the Ohio Valley Painting Company, so an ordinance has been prepared for a vote. It was also discussed to get quotes to change the lights to LED. I received a quote from PCI in the amount of \$11,070.00, which includes replacing the receptacles, add LED bulbs and clean the light fixtures and glass. An ordinance will be prepared in the event Council votes to go forward on the light changeover. In addition, the Finance Committee wants to start a separate fund to hold back \$60,000.00 per year for 5 years for a Main Street decorative light replacement project. This project will be on the agenda for the Public Works meeting. Just for your information from 2020 to present, we have spent \$3,803.82 on Main Street lights repairs.
- I have provided a flyer of the Annual Easter Egg Hunt sponsored by the American Legion Post 615 on April 10th with a rain date of April 16th. The event will be at the Bicentennial Park, next door to the school, beginning at 2pm. The event has been posted on the Village electronic message board as observed below.



- Roccina Niehaus from Wood & Lamping office sent us a refund check for the two pieces of Village property that was changed to tax exemption in the amount of \$596.66.
- I completed the United States Department of Commerce 2022 census of government survey on March 23rd which was due by April 26th. A confirmation of completion has been provided for your records.
- The Chamber has a Grand Opening / Ribbon cutting scheduled for April 14th at 4pm. It is for the Loveless Edge Boutique at 98 S. Main Street. I am providing this information for any Council members that wish to attend.
- I will be out of town from April 18 through April 22 for my children's school spring break. I respectfully ask to be excused from the April 18th Council meeting and ask that Lt. Bledsoe be approved as acting manager in my absence to sign purchase orders.

Police

- I have provided the March dispatched calls for service for your review. Please feel free to contact me with any questions or concerns.
- The March Mayor's Court report has been included. Feel free to contact me or Ashley with any questions or concerns.
- The Code Enforcement report for March has been included and if you have any questions or would like to report a property in violation, contact me or Sgt. Denlinger.
- Lt. Bledsoe will be at training from April 11-15 for phase two of the OPOTA Supervisor Training and Education Program.



Utilities Department

Kevin Krejny-Utilities Director
201 West Water Street Piqua, Ohio 45356
kkrejny@piquaoh.org

April 1, 2022

Water and Sewer Survey Participants,

We have completed our first survey and we could not be more pleased with your attention and input, which made our first year a success. You will notice more information included, with a slightly modified layout as from year's past.

We ascertained rates from all past jurisdiction, and would like to welcome the Village of Covington, as a new participant. One of our goals is to continue to grow the number of participants very year, which in turn provides better data and better insights into what factors determine rates.

Another goal is to make the survey information readily available. We ask that you follow the link below to get the survey information, and please feel free to forward this letter and link on to all members of your organizations that would be interested parties. Also, feel free to download the files for your records.

<https://piquaoh.org/water-and-sewer-rate-surveys/>

Be on the lookout, in coming months, for another survey that will be requesting non-financial information about your water and sewer operations and facilities. The goal of this survey is to build a database that will show more of the details for each jurisdiction, such as; population served, production/treatment volumes, treatment levels, staffing and other important factors that roll up into the financial information shown in the current surveys.

Once again, thank you so much for making this survey successful. We look forward to delivering even more comprehensive survey results going forward. Keep a look out throughout the year for additional requests that we will be sending out in preparation for future surveys.

Sincerely,

Kevin Krejny

Kevin Krejny
Utilities Director
kkrejny@piquaoh.org

Maria G. Weaver

Administrative Assistant
Utilities
mweaver@piquaoh.org

2022 ANNUAL RATE SURVEY COMBINED WATER & SEWER COST

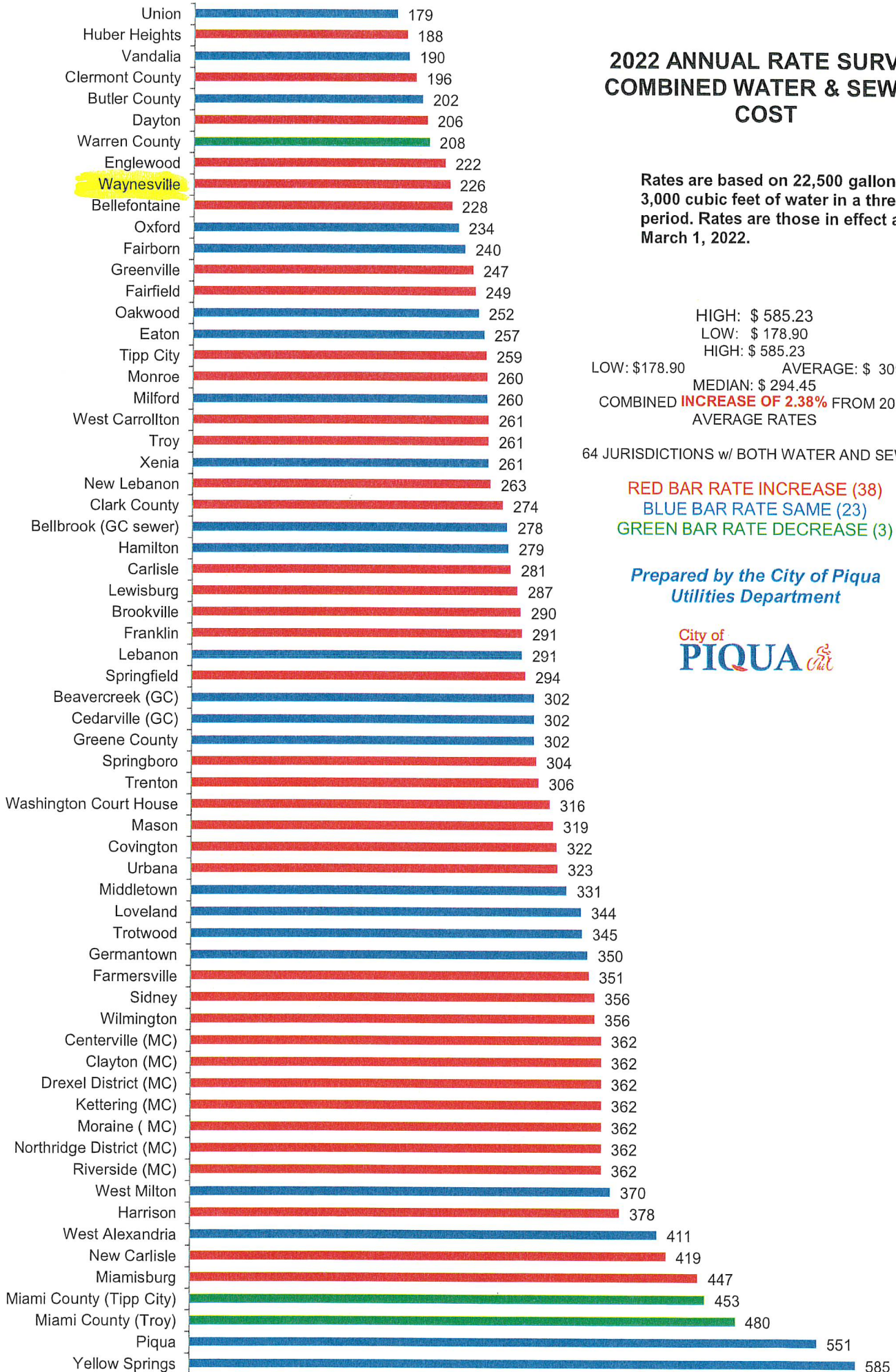
Rates are based on 22,500 gallons or 3,000 cubic feet of water in a three month period. Rates are those in effect as of March 1, 2022.

HIGH: \$ 585.23
 LOW: \$ 178.90
 HIGH: \$ 585.23
 AVERAGE: \$ 309.04
 MEDIAN: \$ 294.45
 COMBINED **INCREASE OF 2.38%** FROM 2021
 AVERAGE RATES

64 JURISDICTIONS w/ BOTH WATER AND SEWER

RED BAR RATE INCREASE (38)
 BLUE BAR RATE SAME (23)
 GREEN BAR RATE DECREASE (3)

*Prepared by the City of Piqua
 Utilities Department*



2022 ANNUAL RATE SURVEY SEWER COST

Rates are based on 22,500 gallons or 3,000 cubic feet of water in a three month period. Rates quoted are those in effect as of March 1, 2022.

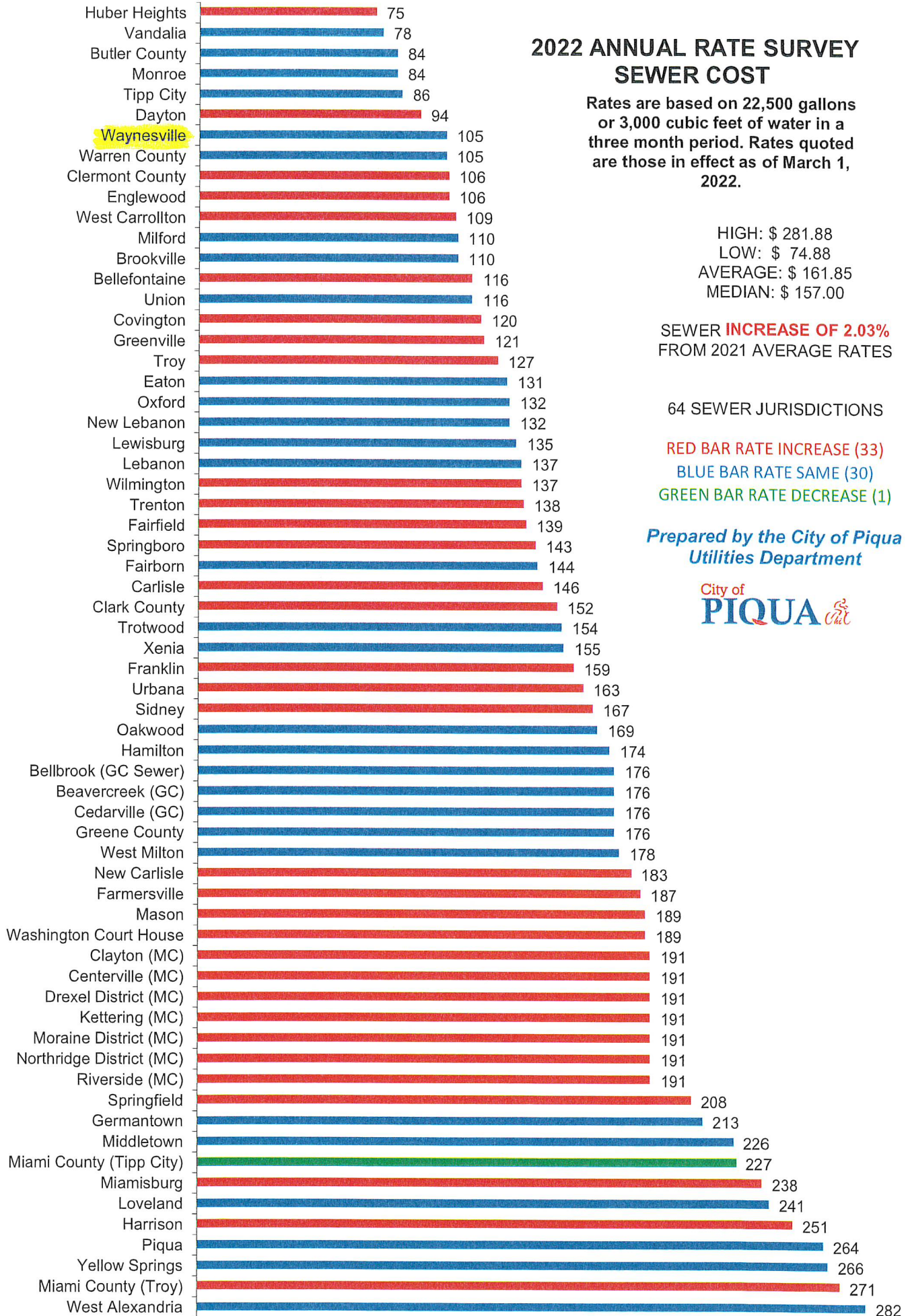
HIGH: \$ 281.88
LOW: \$ 74.88
AVERAGE: \$ 161.85
MEDIAN: \$ 157.00

SEWER **INCREASE OF 2.03%**
FROM 2021 AVERAGE RATES

64 SEWER JURISDICTIONS

RED BAR RATE INCREASE (33)
BLUE BAR RATE SAME (30)
GREEN BAR RATE DECREASE (1)

*Prepared by the City of Piqua
Utilities Department*



2022 ANNUAL RATE SURVEY WATER COST

Rates are based on 22,500 gallons or
3,000 cubic feet of water in a three
month period. Rates quoted are those
in effect as of March 1, 2022.

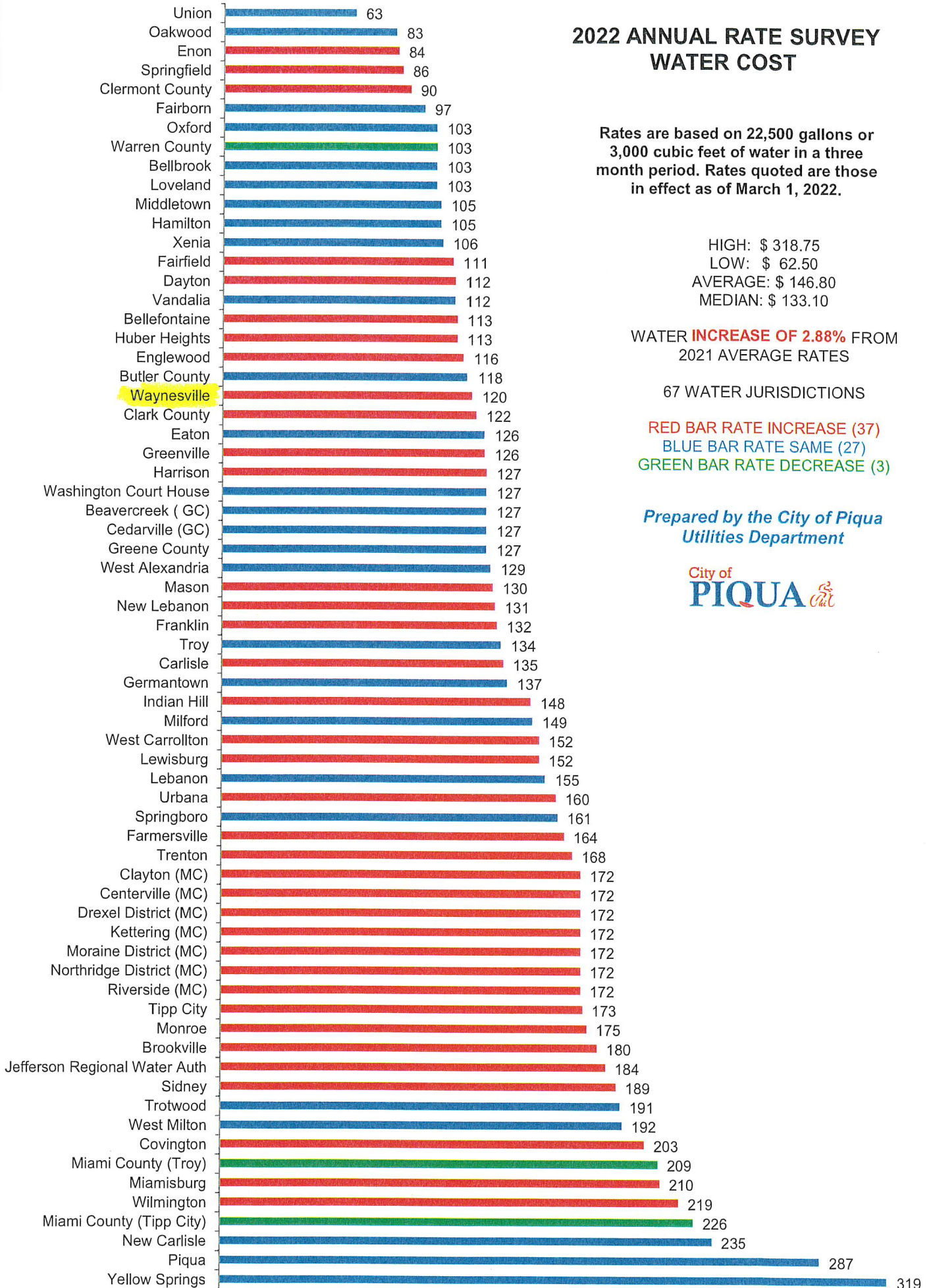
HIGH: \$ 318.75
LOW: \$ 62.50
AVERAGE: \$ 146.80
MEDIAN: \$ 133.10

WATER **INCREASE OF 2.88%** FROM
2021 AVERAGE RATES

67 WATER JURISDICTIONS

RED BAR RATE INCREASE (37)
BLUE BAR RATE SAME (27)
GREEN BAR RATE DECREASE (3)

*Prepared by the City of Piqua
Utilities Department*





Industrial Systems, Inc

P. O. Box 609

Chickamauga, Ga. 30707

Email lynn@incline-vac.com

Mobile: 423-413-7823

incline-vac.com

PROPOSAL- CONTRACT

Total \approx
\$70,000.⁰⁰

DATE: as hi-lited
29-Mar-22

QUOTE # IN250

SHEET 1 OF 3

TO:

Village of Waynesville 513-855-4170
Water Department
1400 Lytle Rd.
Waynesville, Ohio

See our [Video](#) at Incline-Vac.com

ATTENTION:

Nelson McKeever 513-897-8015
nmckeeper@waynesville-ohio.org □

YOUR INQUIRY:

Model 250 Incline-Vac
Quotation good for 30 days

PRICES:

(f.o.b. warehouse at Flintstone, Ga.)

TERMS:

35% Down with purchase order
Balance before Shipment

SHIPPING SCHEDULE :

Currently in stock





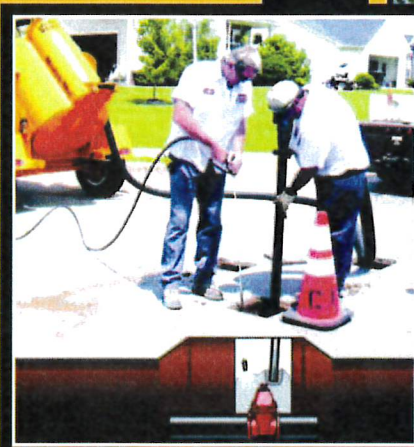
Patented

WWW.INCLINE-VAC.COM

Incline-Vac

UTILITY

Excavator



**Jetter • Hydraulic Tools • Air Tools • Electric Tools
Welder • Powered Boom • Remote Control**

**CLEAN VALVE
AND METER BOXES**

423.413.7823



SPECIFICATION SHEET

incline-vac.com

423-413-7823



U.S. Patent # 7,644,523 & 7,604,023 &
7,503,134 & 6,988,568 & 6,453,584
Pending App. # 61/277,201 & 12/592,142 &
12/653,871 & 11/809,957 & 12/584,441
& 10/810,908 & 10/624,868

DATE: 29-Mar-22

QUOTE # IN Options

SHEET 3 OF 3
Village of Waynesville 513-855-4170
Water Department
1400 Lytle Rd.
Waynesville, Ohio

ITEM	SPECIFICATIONS	UNIT PRICE	TOTAL COST
6	Add a Hydraulic Hose Reel with 30 ft. of hydraulic hose and quick connects		\$1,940.00
7	Add a 70 lb class Hydraulic Driven Jack hammer with a user friendly jack hammer stand; 1- 1.125 x 14 Chisel;		\$2,984.00
8	Add a 300gpm submersible water pump with a user friendly mounting stand Hyd. Driven submersible pump, S.S. vortex impeller, Handles 2.5" solids, 300gpm		\$2,660.00
9	Add a powered jetter hose reel with 300 ft. Of .375" jetter hose		\$3,468.00
10	Add a powered remote control system for the water ON-OFF, vacuum ON-OFF Hydraulics ON-OFF, Boom arm UP-DOWN, IN-OUT		\$2,868.00
11	Add a Vacuum hose reel with 100 feet of 3" vacuum hose		\$3,660.00
12	Add a fire hydrant tester with diffuser, hoses, psi gauge and De-Chlorinator		\$2,640.00
13	ADD a Arrow light board with controller		\$1,986.00
14	Add a Boom arm Hydro- Vacuum excavation system		\$2,850.00
15	Add an articulated boom arm man hole cover lifting & removal tool		\$1,985.00



Incline-Vac

UTILITY

Excavator



Lynn A. Buckner
423.413.7823

Patented



U.S. Patent # 7,644,523 & 7,604,023 &
7,503,134 & 6,988,568 & 6,453,584
Pending App. # 61/277,201 & 12/592,142 &
12/653,871 & 11/809,957 & 12/584,441
& 10/810,908 & 10/624,868



Experience the Incline-Vac ! An efficient, user friendly design with a simple clean appearance; which is a sign that attention to detail and craftsmanship is a major priority.

The Incline-Vac design places a high priority on insuring that an operator has easy access to all features, controls and tools. The Incline-Vac has a tool for each job and has a user-friendly place for each tool.

For example:

- ✓ The Incline-Vac has a compact design with its weight concentrated over the axle. The vacuum tank and water tank are both inclined to reduce the surface area of the stored liquids. This feature reduces slosh during travel. In short, the Incline-Vac is compact, safer, more stable and easy to transport to and from a worksite.
- ✓ A transporting vehicle or trailer can be smaller because of compactness of the Incline-Vac, which makes access to a work area easier.
- ✓ The self cleaning vacuum air filters are mounted on an incline slope and are vibrated to remove dirt.
- ✓ The remote controlled, powered access door allows the vacuum tank and the filter housing to simultaneously empty by gravity. With the vacuum container door open the operator has easy access for washing the air filters and vacuum tank.
- ✓ The Incline-Vac features a non-clogging vacuum wand specially designed to avoid rock or debris clogging of the vacuum hose. It also features an ultra high velocity suction nozzle.
- ✓ The fast digging, custom designed rotary pulse hydro-excavator system makes pot holing and valve box cleaning faster and easier.



See our **Video** at: Incline-Vac.com



Incline-Vac™

UTILITY

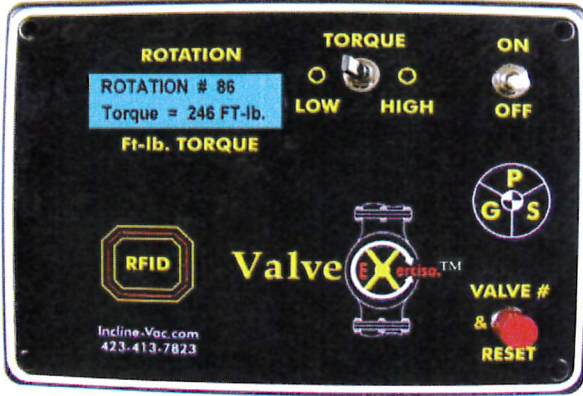
Excavator

Lynn A. Buckner
423.413.7823

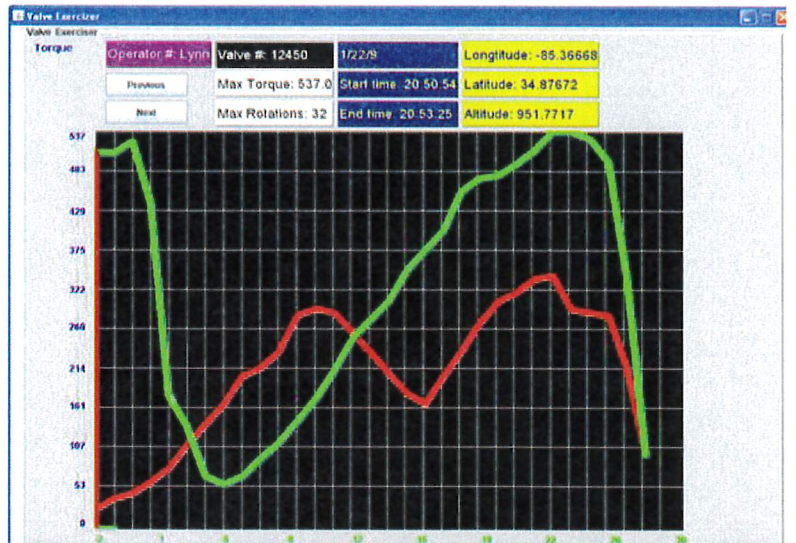
Patented



U.S. Patent # 7,644,523 & 7,604,023 &
7,503,134 & 6,988,568 & 6,453,584
Pending App. # 61/277,201 & 12/592,142 &
12/653,871 & 11/809,957 & 12/584,441
& 10/810,908 & 10/624,868



See our **Video** at: Incline-Vac.com



Incline-Vac

UTILITY

Excavator



Lynn A. Buckner
423.413.7823

Patented



U.S. Patent # 7,644,523 & 7,604,023 &
7,503,134 & 6,988,568 & 6,453,584
Pending App. # 61/277,201 & 12/592,142 &
12/653,871 & 11/809,957 & 12/584,441
& 10/810,908 & 10/624,868

Valve Exerciser-Vac

See our **Video** at: Incline-Vac.com

The Incline-Vac with its options can:

- Clean a valve box or meter box by using its hydro-vacuum excavation system;
- Excavate, replace or reset a damaged valve box or meter box;
- Remove asphalt or concrete from above and around a valve box using the hydraulic jack hammer or concrete saw;
- Exercise 4"- 60" utility valves using the hydraulic driven valve exerciser torque wrench;
- A remote controlled, articulated, powered boom with 13 feet of reach is used to position the valve exerciser torque wrench on to the utility valve;
- For those hard to reach places on the other side of the fence or ditch; The hydraulic powered torque wrench can reach and exercise valves up to 40 feet from the Incline-Vac;
- The Valve exerciser will count the number of rotations with an accuracy of 1 tenth of a rotation and measure the torque required for each tenth of a rotation while opening and closing the utility valve;
- The Valve-X™ Electronic data gathering system is a fully automated data gathering and storage system, which only requires the operator to log in with an RFID tag and punch in an identifying number for the valve that is being exercised.
- The Valve-X™ Electronic data gathering system uses the RFID tag to identify who the operator is and start the data gathering function. The GPS documents the date, starting time, latitude, longitude, elevation, & valve exercising completion time; sensors log the torque and count the rotations with an accuracy of 1 tenth of a revolution. The GPS accuracy is about 1 meter, which verifies which valve is being exercised. All data is stored on a thumb drive. At the end of each day's work the thumb drive can be used for transferring the valve exercising data to a centralized GIS utility mapping system.
- Safely Hydro-Vacuum excavate a defective valve for replacement;
- Vacuum excavate to locate a buried utility;
- Safely excavate a utility line to do repairs or make a tie in;
- Use the 300 GPM hydraulic driven submersible pump to remove large volumes of water from a pit or meter box;
- Exercise a fire hydrant and use the onboard fire hydrant diffuser to flush and test fire hydrants and de-chlorinate the water.



Model 250 Incline-Vac Valve Maintenance Trailer Specifications

Vacuum storage Tank	Model 250 Incline-Vac = A 250 gal. vacuum tank must be positioned at a fixed 45 degree angle (not requiring a tilt to dump mechanism). The vacuum tank must be welded directly to and above the 200 gallon water storage tank. This arrangement places the vacuum tank and the water tank directly over the center of the trailer axle; thus providing increased trailer towing safety. The sloped vacuum tank and sloped water tank also reduces slosh during highway travel because of the reduced surface area of the liquid, thus improving safety while towing.	YES	NO	Specify
Engine	35 HP kohler air cooled gas engine with a 12 volt starter. The Kohler engine must be positioned so that its drive shaft is positioned directly between the water pump and the vacuum blower so that the belt drive force is counter balanced left to right betw	YES	NO	Specify
Vacuum / Blower	Must be a belt driven positive displacement rotary lobe vacuum/blower operating at 500 CFM at 16" in of Hg. With an exit muffler possioned below the blower for the purpose of reducing noise and for directing the residual sound in the direction of	YES	NO	Specify
Controls	Control switches must be on the curb side and include an hour meter, water pressure gauge, anti-freeze selector valve, water tank fill with a 3" air gap and a 1.5" water fill valve and supply line, switches for water pump on-off, hydraulics on-off, vac d	YES	NO	Specify
Vacuum Air Filters	81 sq.ft. of .5 micron wet-dry vacuum filtration with a vibrating self cleaning design. Opening the vacuum tank door must also open access for the filters to be easily washed each time the vacuum tank is opened for unloading debris from the vacuum tank.	YES	NO	Specify
Vacuum hose	25 feet of 3" vacuum hose connected to a 4" vacuum tank inlet to reduce hose clogging at the vac tank attachment. The vacuum inlet must be positioned so as to load the rear of the vacuum tank first.	YES	NO	Specify
Vacuum Wand	5 ft. long x 3" diameter non-conductive vacuum wand with an anti-clogging ultra high velocity suction end. The vacuum wand must be designed so as not to stop inlet flow to the vacuum hose while stopping flow to the entry end of the vacuum wand. This desig	YES	NO	Specify
Vacuum Tank	The vacuum tank unloading door must be powered and remote operated (not requiring an operator to manually unlock or manually open the access door)	YES	NO	Specify
Vacuum Tank	The vacuum tank access powered door must also power a mud removal drag bar for the purpose of assisting in the unloading of dirt from within the vacuum tank.	YES	NO	Specify
Vacuum Tank	A .1875" thick UHMW coating must be positioned on the inside bottom of the vacuum tank for protection of the vacuum tank and for ease of removing and cleaning of the vacuum tank.	YES	NO	Specify
Vacuum Tank	Two rotary pulse turbo nozzles must be positioned inside the vacuum tank for the purpose of assisting in the process of removing and washing dirt from the inside of the vacuum tank.	YES	NO	Specify
Vacuum Tank	A 3" drain valve must be positioned on the vacuum tank door for the purpose of removing liquid from the vacuum tank without having to open the vacuum tank door.	YES	NO	Specify
Vacuum Tank	A 6" stainless steel ball float system shall be used to insure positive shutoff of the vacuum when the vacuum tank is full.	YES	NO	Specify
Vacuum Tank	two Halogen work lights must be positioned above the vacuum tanks highest point for the purpose of providing night lights to both front and rear of the work area.	YES	NO	Specify
Vacuum Tank	A Strobe light must be positioned above the highest point of the vacuum tank.	YES	NO	Specify
Water Storage	A 200 gal. water tank must be positioned so as to have a fixed 45 degree angle under the vacuum tank, thus concentrating the weight over the trailer axles. The sloped water tank also reduces slosh during highway travel because of the reduced surface are	YES	NO	Specify
Water Storage	The 200 gal. water tank must have a 3" valved water fill, a 1.5" water fill supply line with a 3" air gap, a 1.5" valved drain and a 3/4" hydrant spigot for hand washing and a water level sight tube.	YES	NO	Specify
Water Pump	A belt driven, clutch operated, tri-plex water pump operating at 5 gpm at 3,000 psi and having a low water level switch positioned in the water tank which will disengage the clutch under a condition of low water level.	YES	NO	Specify
Water system	A water hose reel with locking mechanism with 50 feet of 3/8" 4,000 psi hose	YES	NO	Specify
Water system	5' long water wand with a 5 GPM rotary pulse turbo digging nozzle	YES	NO	Specify
Water system	3' long water wand with a wash down nozzle	YES	NO	Specify
PAINT	The Vacuum excavation assembly must have a baked on powder coat paint.	YES	NO	Specify
Trailer	7,000 lb. GVWR rated trailer with a single 7,000lb torsion axle, electric brakes, 8 lug 16" wheels with 235/75R16 wheels.	YES	NO	Specify
Wiring and Lighting	All lights and wiring D.O.T. compliant	YES	NO	Specify
Hitch	2 5/16" ball hitch	YES	NO	Specify
Jack Stand	10,000 lb. 15" lift Bulldog drop leg jack	YES	NO	Specify
Tool Box	36"L x 20"D x 18"H diamond plate aluminum tool box	YES	NO	Specify
Trailer Paint	The trailer assembly must have a baked on powder coat paint.	YES	NO	Specify

VALVE EXERCISING / valve turner

Valve Exerciser Head	A hydraulic driven valve turner with a rated maximum torque of 1,000 ft.lb. of torque and a variable rpm range of 0-30 rpm and a rotation counting accuracy of 1/10th of a revolution. The maximum available torque to the valve stem must be present	YES	NO	Specify
Valve stem rotation speed	The Valve stem rotation speed, direction of rotation and torque must be finger tip adjustable with a single joy stick.	YES	NO	Specify
Preset the maximum allowable torque	The operator must be able to preset a maximum available torque for opening or closing water valves , by simply closing a ball valve on the exerciser for the purpose of simulating a stuck water valve, observing the maximum torque value on a display screen a	YES	NO	Specify
Valve Exerciser Head	The valve turner head must power tilting forward or back 30 degrees for the purpose of placing the valve turner onto a water valve stem that is not installed in a vertical position.	YES	NO	Specify
Valve Exerciser Head	The torque wrench head must be able to be rotated left to right up to 90 degrees in order to position it onto a water valve stem that is not installed in a vertical position or to also be able to couple to a fire hydrant cap and to loosen and remove the c	YES	NO	Specify
Valve Exerciser Head	The valve exerciser head must be able to be easily disconnected from the boom arm and have at least 30 feet of quick connectable hydraulic hoses in order to use the valve exerciser as a hand held portable exerciser for reaching valves at a distance of up to 30 feet from the valve maintenance trailer	YES	NO	Specify
Valve Exerciser Head	The hydraulics must be quick coupled to the valve exerciser so that the hydraulics may be quickly disconnected from the valve exerciser and then be coupled to other hand held hydraulic tools such as a hydraulic driven submergible water pump.	YES	NO	Specify
Valve Exerciser Head	The valve exerciser hydraulic flow rate and pressure must be compatible with common commercial hydraulic hand tools. (8 gpm at 2,000 psi)	YES	NO	Specify
Valve Exerciser Head	A 5' to 9' telescoping valve key must be provider.	YES	NO	Specify
Valve Exerciser Head	The valve exerciser must be fitted with a female fire hydrant receiver coupling so that it may quickly open a fire hydrant and or exercise an in ground utility valve without adding or changing adapters.	YES	NO	Specify
Valve Exerciser Head	The valve exerciser must display the rotation count to the nearest tenth of a revolution and display the torque.	YES	NO	Specify
Valve Exerciser Head	The valve exerciser must have a baked on powder cost paint	YES	NO	Specify

Articulated Boom				
Articulated Boom arm	The articulated boom arm must have in excess of 320 degrees of horizontal travel.	YES	NO	Specify
Articulated Boom arm	The articulated boom arm must have in excess of 60 degrees of vertical travel in order to reach over obstructions and into ditches.	YES	NO	Specify
Articulated Boom arm	The articulated arm must have two elbows in order to reach around obstructions.	YES	NO	Specify
Articulated Boom arm	The articulated boom arm must be able to also power tilt the exerciser head forward or back up to 30 degrees for the purpose of easy positioning of the exerciser onto a utility valve nut.	YES	NO	Specify
Articulated Boom arm	The articulated boom must have a reach of 13 feet.	YES	NO	Specify
Powered Articulated Boom arm	The articulated boom arm for vertical movement must have a 12 volt powered linear actuator for adjusting the elevation of the valve turner.	YES	NO	Specify
Powered telescoping Boom arm	The articulated boom must have a POWERED telescoping arm for extending its reach and for ease of positioning a valve exerciser over a utility valve.	YES	NO	Specify
Articulated Boom arm	Boom arm movement up or down as well as telescoping in or out must be controlled by switches located on the valve exerciser handles.	YES	NO	Specify
Articulated Boom arm	The articulated boom assembly must have a baked on powder coat paint, and the elbows must be of the permanently lubricated, oil impregnated brass bushing design.	YES	NO	Specify

Electronic Data Gathering & Documentation				
Electronic Data Documentation	The data documentation electronics must include a digital display rated from -40F to +140F, an RFID reader, a GPS receiver, an automated data gathering program which automatically collects and stores all valve exercising data to a thumb drive, a utility v	YES	NO	Specify
Electronic Data Documentation	Must provide a operators RFID key ring tag for each operator trained to operate the valve exerciser.	YES	NO	Specify
Electronic Data Documentation	Must provide a supervisor RFID key ring tag for each operator qualified to establish a maximum allowable valve turner torque.	YES	NO	Specify
Electronic Data Documentation	The Data Documentation electronics must include an RFID reader which will only allow a trained operator with his RFID tag to activate the system.	YES	NO	Specify
Electronic Data Documentation	When a valve is ready to be exercised, an operators RFID tag must activate the data documentation electronics which then automatically documents who the operator is and down loads from a built in GPS, the valve exercising date, starting time, latitude, longitude and elevation along with the torque required to rotate the valve and counts the valve rotations with an accuracy of 1 tenth of a rotation.	YES	NO	Specify
Electronic Data Documentation	The data documentation electronics must automatically store all data to a weather tight removable flash drive memory stick which may be used to transfer data to a central utility computer with a GIS program.	YES	NO	Specify
Electronic Data Documentation	The data documentation electronics must display the ft. lb. of torque and the rotation count to the nearest tenth of a rotation.	YES	NO	Specify
Electronic Data Documentation	The data documentation electronics must be Microsoft windows compatible and display the data in both Excel raw data form and in a use friendly graph form.	YES	NO	Specify

OPTIONS

Hydraulic Hose Reel	A Hydraulic Hose Reel with 30 ft. of hydraulic hose and quick connects	YES	NO	Specify
Jack Hammer	A 70lb. Class hydraulic jack hammer with a fixed position user friendly jack hammer stand	YES	NO	Specify
Submersible Water pump	A 300 gpm hydraulic driven submergible water pump with a user friendly mounting stand. The pump shall have a S.S. vortex impeller, handle 2.5" solids and pump 300gpm of water at 30'	YES	NO	Specify
Fire hydrant tester	A fire hydrant flushing and pressure testing system to include 20 feet of 2.5" fire hose, a 2.5" pressure test gauge, and a water pressure dissipater with diffuser.	YES	NO	Specify
Arrow Bar	A multifunction arrow bar mounted high on the vacuum air filter but below the work lights and strobe light.	YES	NO	Specify
100' vacuum hose reel	A sturdy built hose reel for storing 100 feet of 3" Vacuum hose as three sections of 3" x 33' lengths of vacuum hose.	YES	NO	Specify
Hydro-Vacuum Hose Boom Arm System	A vacuum hose and pressure water hose mounting system for the powered articulated boom arm for the purpose of having a hydro-vacuum excavation system supported and articulated up or down or telescoped in or out by the articulated boom arm support system.	YES	NO	Specify
Remote Control	A powered remote control system for the water ON-OFF, vacuum ON-OFF, Hydraulics ON-OFF, Boom arm UP-DOWN & IN-OUT	YES	NO	Specify
Powered Jetter Hose Reel	A 12VDC powered hose reel with 3,000 psi rotary water flow joints, controls for powering the hose in or out 5 gpm at 3,000 psi jetter nozzle and 250 feet of 3,000 psi jetter hose mounted on the reel.	YES	NO	Specify
Man Hole Cover Remover	The boom arm must be powered up and down with an adjustable mount for attaching a man hole cover lifting system.	YES	NO	Specify





Water Utility Products
 600 Knightsbridge Pkwy | Lincolnshire IL 60069
 T +1 847 537 8800 | F +1 847 520 1147
 ehwachs.com

Quotation

Page 1 of 1

TO: **Nelson McKeever**
 Village of Waynesville
 1400 Lytle Road
 Waynesville, OH 45086-8482

Date: 11/23/2021
 Quotation Number: KR166500
 Payment Terms: Net 30 Days
 Shipping Terms: FOB Origin
 Valid Through: 1/22/2022
 Estimated Delivery: 8 Weeks ARO

E.H. Wachs is pleased to offer the following quotation.

Item Number	Description	Qty	U/M	Unit Price (USD)	Line Total (USD)
1	<p>77-000-36 Standard LX (Gas) – VMT (RH): Single turner valve maintenance trailer; includes Wachs 750 Ft/lb (1020 Nm) Extended Reach Valve operator for those preventive maintenance activities, telescoping valve key and Wachs ruggedized TC-100 with GPS controller/datalogger. A 27 HP (20 kW) gasoline powered Kohler overhead cam air cooled engine provides ample power for all contained functions, including an auxiliary HTMA Class II circuit; 10 gallon (38 L) reservoir, fan cooled heat exchanger, continuous duty rated for 8 GPM (30.3 LPM) @ 2,000 PSI (140 bar). A positive displacement blower provides 500 CFM (14.2 cmm)-11" (280mm) Hg vacuum, with spoils containment provided by a 250 (950 L) gallon tank with power hydraulic dump (rear discharge) and latching rear door. Also driven from the common power train is a 2.5 GPM (9.5 LPM) @ 3000 PSI (210 bar) pressure washer system with 3 gallon (11.4 L) anti-freeze tank and 95 gallon (360 L) water tank. Includes 2-1/2" (63.5mm), 1-1/4" (31.75mm) & 7/8" (22mm) suction wands and one each short and long wash-down guns. The LX package bundles the service light bar with arrow board, 45' (14 M) auxiliary hydraulic hose reel for operation of hydraulic power tools & Bluetooth tethering module (installed in ERV-750) for wireless communication between the exerciser and Controller/Data Logger and 24" (61cm) X 18" (46cm) x 18" (46cm) aluminum job box.</p> <p>Other options available include: Under deck mounted Spare Tire Kit (77-411-00), 2-5/16" Ball Tongue (77-215-01), 45lb Breaker, Mount and 14" Moil Point (08-000-10, 08-405-00 & 08-410-02) or already GPS enabled controller/datalogger, however adding Trimble R2 GNSS receiver (79-412-02) provides capability of submeter to centimeter level positioning accuracy (highest accuracy in real-time with the use of correction sources).</p>	1	EA	72,375.00	72,375.00
				Subtotal	72,375.00
				Shipping & Handling	770.00
				Total (USD)	\$73,145.00

We will prepay and add shipping charges to your order, or we can ship collect via your choice of carrier service. If you have any questions please feel free to call Rick Brennan at 513-305-3390 or call me at 847-484-2773.

(SALES TAX!!!!) We collect sales tax in all but the following states: AK, DE, MT, OR and NH. If you are tax exempt please supply your identification number and certificate with your order. If your exempt number is not on file, tax will be added to your invoice.

Please reference this quote number when placing your order. Thank You.

Ken Redding
 Utility Technical Sales Rep
 847-484-2773
 kredding@ehwachs.com

Sales of E.H. Wachs products and services are expressly limited to and made conditional on acceptance of its current Terms and Conditions of Sale, found at www.ehwachs.com ("Terms"). Any additional or different terms are hereby rejected. Commencement of work by E.H. Wachs or acceptance of delivery of products by you constitutes your acceptance of the Terms.



Contact Us Today
(847) 537-8800
sales@turnvalves.com

Divisions

Products

Industries

Downloads

Community

Service & Rentals

Contact

Tech Support

[Home](#) > [Valve Maintenance Trailers](#)



ended

Trin
R2 C

on Satellite Sys

Hyd
Brec



WDP 3500 Dewatering Pump

Standard LX Valve Maintenance Trailer VMT, Gas

As the industry leader in valve maintenance systems, Wachs Utility Products offers a wide range of equipment designed to perform recommended or mandated procedures. Wachs products can help track your valuable water infrastructure and keep it operating at peak efficiency. A favorite in trailer mounted valve maintenance systems, Wachs Standard LX is among our bestselling products, excelling at all the functions typically associated with a municipality or water district self-performing a valve maintenance program.

Utilizing Wachs exclusive VITALS software to help track your valuable water infrastructure and keep it operating at peak efficiency, you'll discover the Standard LX is "vital" to your organization. The Standard LX trailer includes our class leading ERV-750 extended reach operator with a reach of 13 feet (3.96 meters) and offering a powerful 750 ft-lbs of torque. This is the industry "standard" for a completely upgradeable, versatile platform designed to transport all the valve maintenance and vacuum tools needed in the field.

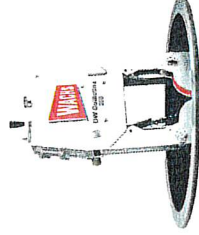
Wachs Standard LX supports our industry exclusive VITALS software that uses "No Assumptions" logic in its programming. This class leading software, developed over the last three decades, has one goal in mind - to eliminate misdirection and over-torquing of valves during operation to prevent damaging or breaking them. Comprised of both mobile and desktop modules, VITALS allows you to set torque limits and record infrastructure details including location, valve-operating direction, and torque applied.



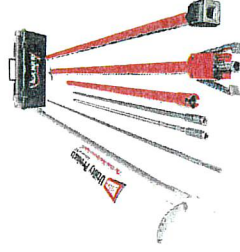
Valve Box
Budd



Diar
Wire
Guil
208
Pipe
Cutt



Valv
Rx



It is powered by a powerful Kohler 27 HP gasoline engine, and comes complete with a wireless handheld controller with datalogger, a powerful 500 CFM-11 in Hg vacuum, a 250 gal spoils tank utilizing Wachs exclusive hydraulic slide, tilt & rear discharge with a power latching rear door, a 2.5 GPM@3000 psi pressure washer system with 95 gallon water tank, an HPU with a HTMA Class II circuit, 10 gal reservoir, and a fan cooled heat exchanger, producing 8 gpm @ 2000 psi.

Loaded with storage and accessories, this trailer is ready for serious valve maintenance work. The Standard LX is a single valve turner trailer, meaning it is not designed to mount the powerful TM-7 SD Plus valve exerciser (as the Grand LX does). The TM-7 Plus is ideal for the larger or stubborn valves found in bigger or more established municipalities.

Standard LX Valve Maintenance Trailer VMT, Gas with single valve turner includes:

- Wachs 750 Ft/lb Extended Reach Valve ERV-750 valve operator
- Ruggedized HC-100 with GPS controller/datalogger
- 27 HP gasoline powered Kohler overhead cam air cooled engine provides ample power for all contained functions
- Auxiliary HTMA Class II circuit (10 gallon reservoir, fan cooled heat exchanger, continuous duty rated for 8 GPM @ 1,800 PSI).
- Positive displacement blower provides 500 CFM-11 in Hg vacuum
- Spoils containment provided by a 250 gallon tank with power hydraulic dump (rear discharge) and latching rear door
- 2.5 gpm @ 3000 psi pressure washer system
- 7 gallon anti-freeze tank
- 95 gallon water tank
- 2-1/2in, 1-1/4in & 7/8" suction wands and one each short and long wash-down guns

The LX package bundle:

- Light bar
- Auxiliary hydraulic hose reel
- Bluetooth tether
- Job box



Videos

Table of Contents:

- [0:00:10](#) Opening
- [0:00:30](#) Unpacking & Transport
- [0:03:39](#) Workflow
- [0:04:10](#) Features
- [0:17:11](#) Set-Up
- [0:29:45](#) Testing
 - [0:31:10](#) Electrical Charging
 - [0:34:00](#) Service Lighting
 - [0:37:45](#) Vacuum
 - [0:40:00](#) Pressure Washer
 - [0:42:40](#) Auxiliary Hydraulics
 - [0:45:40](#) ERV-750
- [0:59:35](#) Preventive Maintenance
- [1:11:45](#) Contacts and Resources

Specifications

Power:
Gas

Part Number:
77-000-36

Operating Weight:
7000 lb (3175 kg)

Shipping Dimensions:
L 15 ft x H 7ft x W 7 1/2ft

Shipping Weight:
7000 lb (3175 kg)

Warranty:
1 Year Limited Warranty

Downloads

- [Manual](#)
- [Datasheet](#)
- [Bid Spec](#)

Support

- [Product Support](#)
- [Product Manuals](#)
- [Product Catalog](#)
- [Software Downloads](#)
- [Application Reports](#)
- [Company](#)
- [Upcoming Events](#)
- [Company History](#)
- [Company Affiliations](#)
- [Quality/ISO Certification](#)
- [Export Compliance](#)

Contact Us



[Contact Form](#)

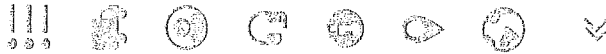


sales@turnvalves.com

Follow Us



[Facebook](#)



Datasheets

Parts and Service

Emissions Information

Warranty Registration

Tech Support

Tech Service Bulletins

Terms and Conditions

Privacy Policy

ITW Modern Slavery and

Human Trafficking Statement



600 Knightsbridge
Parkway

Lincolnshire, IL 60069



(847) 537-8800

© 2022 E.H. Wachs, A Division of ITW. All rights reserved.



PCI Services

62 Big Pine rd.
Winchester, OH 45697 US
9375159369
nmerrill6@gmail.com

Estimate

ADDRESS

Village of Waynesville
1400 Lytle Rd
Waynesville, OH 45068
United States

ESTIMATE # 0012096

DATE 03/31/2022

EXPIRATION DATE 04/29/2022

DATE	ACTIVITY	DESCRIPTION	QTY	RATE	AMOUNT
03/31/2022	Services	1 man 2.5 hours each refurbish main street lights (54) to led replace receptal	135	50.00	6,750.00
03/31/2022	material	Materials led bulbs and receptal while we have the fixture apart we can clean the glass village to provide cleaner and towels	54	80.00	4,320.00
TOTAL					\$11,070.00

Accepted By

Accepted Date



The American Legion Post 615

Annual Easter Egg Hunt 2022

**2:00 p.m. – Sunday, April 10
Centennial Park – Next to WHS
Appearance by the Easter Bunny!**

(Rain date Sunday, April 16 at 2 p.m.)

**Ages: Infants to 2 up to 10 years old
(Infants to 2 years old only 1 parent allowed on field)**

**Bring the family and your baskets!
Hope to see you all there!**

COGE-L1
(02-02-2022)



UNITED STATES DEPARTMENT OF COMMERCE
U.S. Census Bureau
Office of the Director
Washington, DC 20233-0001



904 2200 00 3 L1 I
EL1001-35748



WAYNESVILLE VILLAGE
ATTN: VILLAGE MANAGER
1400 LYTLE RD
WAYNESVILLE OH 45068-8482

A Message from the Director, U.S. Census Bureau:

We request your participation with the **2022 Census of Governments, Survey of Public Employment & Payroll**. This survey is the only source of comprehensive information on the employment and payroll for state and local governments in the United States. The information collected serves as an integral part of the foundation for developing national economic and public policy by measuring public activity.

Please complete the survey online for the pay periods that include March 12, 2022, using the information below.

Authentication Code: [REDACTED]

Due Date: April 26, 2022

1. **Register OR sign in** at <https://portal.census.gov>
2. **Add** your authentication code.
3. **Report** by clicking on "REPORT NOW." You can return to your account over multiple sessions to complete the survey.

Information about the authority, confidentiality, and burden of this data collection can be found on the back of this letter.

For assistance with completing this survey, please sign into your Census Bureau account or call our customer help line at 1-800-832-2839, Monday through Friday, 8:00 a.m. to 5:00 p.m. Eastern time.

Thank you in advance for your time and participation, and for helping the U.S. Census Bureau measure America's people and economy.

Sincerely,

A handwritten signature in black ink that reads "Robert L. Santos".

Robert L. Santos
Director

United States[®]
Census
Bureau

ID 172661



census.gov

2022 Census of Governments Survey of Public Employment & Payroll E-4: Municipalities, Counties, Townships

[Main Menu](#)

[FAQs](#)

[About Survey](#)

[Instructions](#)

[Print/Review PDF](#)

[Attach Data](#)

[Logout](#)

Website: [Survey of Public Employment & Payroll](#)
Telephone: 1-800-832-2839 weekdays, 8AM to 5PM ET

Submission Confirmation

Thank you for completing the 2022 Census of Governments: Survey of Public Employment & Payroll!

The U.S. Census Bureau has received your data and appreciates your time and participation. Please keep a copy of this confirmation for your records.

Government Name: WAYNESVILLE VILLAGE

User ID: ██████████

Submission Date & Time: Wednesday March 23, 2022, 09:23:30 AM EDT

Would you like a PDF of the worksheet with your answers?



[Print Confirmation Screen](#)

The letters PDF or the  icon indicate a document is in the [Portable Document Format \(PDF\)](#). To view the file you will need the [Adobe® Reader](#), which is available for **free** from the Adobe web site.

[Burden Statement](#)

[Accessibility](#)

[Privacy](#)

[Security](#)

CALLS FOR SERVICE

From Date: 3/1/2022 12:00:00am

To Date: 3/31/2022 11:59:59pm

Type Description	Count
911 Hangup	6
911 Silent	6
Abandoned Vehicle	1
Alarm - Business	10
Alarm - Financial Instituion	1
Animal Complaint	1
Attempt to Locate	2
Business Check	113
Citizen Assist	8
Dispute - Tenant/Neighbor	1
Emergency Notification	1
Escort	7
Extra Patrol	144
Fire - Electric Hazard	1
Fire - Gas Leak/Odor	2
Fire - Service Call	2
Follow Up Investigation	15
Harassment/Stalking/Threat	4
Juvenile Complaint	4
Lock Out	4
Medical	24
Mental Disorder	4
Narcotics Complaint	2
Noise Complaint	2
Notification Only	3
Open Door/Window	2
Parking Complaint	3
Phone Call	14
Road Hazard./Disabled Vehicle	10
Special Detail	2
Suspicious Person	6
Suspicious Vehicle	5
Traffic Crash Non Injury	3
Traffic Stop	95
Unknown Nature	1
Vacation House Check	28
Vehicle Alarm	1
Warrant Confirmation	1
Well Being Check	3
TOTAL	542

Monthly Mayor's Court Report

WAYNESVILLE MAYOR'S COURT
Cash Flow for March 2022

Page : 1
Report Date : 04/01/2022
Report Time : 08:57:20

	Current Period	Year-To-Date	Last Year-to-Date
City Revenue From:			
Court Costs			
COMPUTER FUND	\$711.00	\$1,602.00	\$1,197.00
LOCAL COSTS	\$3,063.00	\$6,911.00	\$5,131.00
Additional Costs	\$0.00	\$0.00	\$39.00
Fines			
Overpayment / Adjustment	\$0.00	\$0.00	\$0.00
City Revenue From Fines	\$7,552.35	\$17,182.35	\$14,110.50
Fees			
Fees	\$412.25	\$945.55	\$414.50
Bond Forfeits			
Bond Forfeits	\$0.00	\$390.00	\$0.00
Miscellaneous/Other			
Bond Administration Fees	\$0.00	\$0.00	\$0.00
Total to City:	\$11,738.60	\$27,030.90	\$20,892.00
State Revenue From:			
Court Costs			
VICTIMS OF CRIME	\$702.00	\$1,588.00	\$1,188.00
DRUG LAW ENFORCEMENT FUND	\$262.50	\$598.50	\$430.50
INDIGENT DEFENSE SUPPORT FUND	\$1,945.00	\$4,405.00	\$3,245.00
Fees			
Fees	\$0.00	\$30.00	\$0.00
Total to State:	\$2,909.50	\$6,621.50	\$4,863.50
Other Revenue From:			
Court Costs			
INDIGENT DRIVER ALC TREATMENT FUND	\$112.50	\$256.50	\$184.50
Restitution			
Restitution	\$0.00	\$0.00	\$85.00
Total to Other:	\$112.50	\$256.50	\$269.50
TOTAL REVENUE *	\$14,760.60	\$33,908.90	\$26,025.00
*Includes credit card receipts of	\$5,936.00	\$12,176.00	\$10,384.00

END OF REPORT

Date	Address	Violation	Deadline Date	Letter Sent	Contact Made	Citation Issued
5/17/2021	Adamsmoor Dr	High Grass		5/25/2021		
5/17/2021	1017 Crede Way	High Grass			5/17/2021	
5/17/2021	1037 Brookfield	High Grass			5/17/2021	
5/17/2021	1092 Brookfield	High Grass			5/17/2021	
5/17/2021	613 Preston Dr	Roofs and Drainage		5/25/2021		
5/17/2021	599 Chapman St	Roofs and Drainage, Sidewalks and Driveways, Exterior of Premises, Exterior Walls		5/25/2021		
5/17/2021	555 High St	High Grass			5/17/2021	
5/17/2021	513 High St	High Grass, Accumulation of Rubbish or Garbage		5/25/2021		
5/17/2021	557 Chapman St	Parking		5/25/2021		
5/17/2021	298 North St	Parking, High Grass, Sidewalks and Driveways, Roofs and Drainage, Accumulation of Rubbish or Garbage, Overhang Extensions		5/25/2021		
5/17/2021	135 N 3rd St	High Grass		5/25/2021		
5/21/2021	Brookfield Drive	Tan van w/ flat tires sitting on road for "awhile"				11/15/2021
5/24/2021	15 Third St	Rotted front steps				
5/24/2021	65 Third St	Crumbling chimney? Also different color				
5/24/2021	58 Third St	Front window area detached from house. Needs condemned				
5/24/2021	615 High St	Doors, weeds/grass, roofs and drainage, exterior walls, Overhang Extensions, exterior of premises		6/8/2021		
5/24/2021	Edwards & High	Car on blocks			8/2/2021	
6/7/2021	162 N 4th St	Removal of dead branches, sidewalks	6/25/2021	6/8/2021		8/16/2021
6/7/2021	312 N Main St	Roofs and Drainage		6/8/2021		
6/21/2021	552 North St	Park, Junk Motor Vehicle		10/5/2021		
6/21/2021	260 Chapman St	Poison Ivy, High Grass/Weeds, Untrimmed Bushes		6/22/2021	6/21/2021	
6/21/2021	296 S Main St	Brush	6/25/2021	6/22/2021	6/22/2021	
6/20/2021	400 N 5th St	Snow Plow, Parking in grass			6/20/2021	
6/21/2021	1218 Adamsmoor Dr	High Grass/Weeds, Roofs and Drainage		6/22/2021		
6/21/2021	195 S 3rd St	High Grass/Weeds, Rubbish			6/21/2021	
6/21/2021	103 N 3rd St	Overhang Extensions, Rotting deck boards, Windows and Door Frames, Rotting Soffit, Rubbish, Brush, Roofs and Drainage		6/21/2021		
7/19/2021	1405 Adamsmoor Dr	Parking in Grass			7/19/2021	
7/19/2021	1017 Crede Way	High Grass/Weeds, Roofs and Drainage		7/20/2021		
7/19/2021	1218 Adamsmoor Dr	Roof and Drainage		7/20/2021		
7/19/2021	972/974 Brookfield Dr	Exterior of Premises		7/20/2021		
7/19/2021	Adamsmoor Dr	High Grass/Weeds		7/20/2021		
7/19/2021	220 E Ellis Dr	High Grass/Weeds			7/19/2021	
7/19/2021	296 N Main St	High Grass/Weeds			7/19/2021	
7/19/2021	120 N Main St	Exterior of Premises		7/20/2021		
7/19/2021	222 S 3rd St	High Grass		10/5/2021		
7/19/2021	643 Robindale Dr	High Grass		7/20/2021		
7/19/2021	794 Robindale Dr	High Grass		7/20/2021	7/19/2021	

7/19/2021	33 S Main St	Windows and Doors			7/20/2021		
7/26/2021	120 N Main St	Wood piled up in back yard		8/9/2021		7/26/2021	8/9/2021
8/2/2021	1092/1094 Brookfield D	Roof and Drainage			8/3/2021		
					10/26/2021		
8/2/2021	1032/1034 Brookfield D	Roof and Drainage			8/3/2021		
					10/26/2021		
		Spoke to Mike Morley 11-15-2021, has new roof flashing on order to make repair					
8/2/2021	250 Hilltop Ct	Parking in grass				8/2/2021	
8/2/2021	80 E Ellis Dr	Siding				8/2/2021	
8/16/2021	193 N 5th St	Siding			8/17/2021		
8/16/2021	1140 Lytle Rd	Low hanging branches			8/17/2021		
8/16/2021	796 Franklin Rd	Low hanging branches			8/17/2021		
8/16/2021	514 High St	Dead branches, low hanging braches, sign			8/16/2021		
8/16/2021	130 N Main St	High grass/weeds			8/17/2021		
8/16/2021	106 N 4th St	Misc. items in the front yard			8/16/2021		
8/16/2021	108 N 4th St	Misc. items in the front yard			8/16/2021		
8/16/2021	120 N 4th St	Misc. items in the front yard			8/17/2021		
8/16/2021	76/84 N Main St	Broken Window			10/5/2021		
8/30/2021	499 Old Stage Rd	Excevation dirt on neighbors yard		10/5/2021	9/2/2021	8/30/2021	
8/30/2021	264 N Main St	Home Occupations, Sanitation, Parking, Outdoor Storage, Accessory Structures, Storage of junk, disabled vehicles and rubbish on premises, Exterior of premises, Roofs and drainage, Stairways, decks, porches and balconies, Handrails and guards, Window and door frames, Accumulation of rubbish or garbage, Disposal of rubbish or garbage		10/5/2021	9/2/2021	8/30/2021	10/18/2021
		Pre-Trial rescheduled for 3rd time on 02/16/2022					
		Plea and Sentence scheduled for 04/21/2022					
10/4/2021	181 N Third St	Parking in Grass, Storage of junk, disabled vehicles and rubbish on premises			10/5/2021		
10/4/2021	170-174 N Fourth St	Outdoor Storage, Trimming or removal of trees, plants and shrubbery			10/5/2021		
10/4/2021	127 North St	Roofs and drainage, weeds, exterior of premises, overhang extensions			10/5/2021		
10/4/2021	367 Franklin Rd	Outdoor Storage, Accumulation of rubbish or garbage, Disposal of rubbish or garbage			10/5/2021		
10/4/2021	122 Franklin Rd	Parking in grass, outdoor storage, rubbish		11/1/2021		10/4/2021	
10/18/2021	Brookfield Dr	Overtime Parking, Junk Motor Vehicle			10/26/2021		11/15/2021
10/18/2021	Adamsmoor Dr	High grass/weeds			10/26/2021		
10/18/2021	96 S Marvin Ln	Sidewalks and Driveways			10/26/2021		
10/18/2021	1215 Anthony Trace	Junk Motor Vehicle			10/26/2021		
11/8/2021	398 North St	Boat parked on street				11/8/2021	
11/15/2021	464 N 5th St	Junk Motor Vehicle			11/16/2021		
11/15/2021	613 Preston Dr	Junk Motor Vehicle, Outdoor Storage			11/16/2021		
11/15/2021	732 Royston Dr	Parking in grass			11/16/2021		
11/15/2021	575 Royston Dr	Outdoor Storage, Junk Motor Vehicles			11/16/2021		

11/15/2021	39 W Ellis Dr	Parking in grass, Junk Motor Vehicles			11/16/2021	
11/15/2021	1010 Bayberry	Parking in grass			11/16/2021	
11/15/2021	1009 Justin Ridge	High Grass			11/16/2021	
12/12/2021	444 N 5th St	Sidewalks				12/12/2021
12/20/2021	507 Anson Dr	Sidewalks			1/3/2022	
12/20/2021	698 Preston Dr	Sidewalks			1/3/2022	
12/20/2022	644 Preston Dr	Sidewalks			1/3/2022	
12/20/2021	548 Preston Dr	Sidewalks			1/3/2022	
12/20/2021	525 Preston Dr	Sidewalks			1/3/2022	
12/20/2021	704 Robindale Dr	Sidewalks			1/3/2022	
12/20/2021	616 Robindale Dr	Sidewalks			1/3/2022	
12/20/2021	160, 162 & 168 N 4th	Doors & Windows, Black Mold, Ceiling Falling Down			1/3/2022	
12/20/2021	1037 Brookfield Dr	Sidewalk			1/3/2022	
12/20/2021	267 S 3rd St	Sidewalk			1/3/2022	
12/20/2021	39 N 4th St	Accessory Structures			1/3/2022	
1/24/2022	120 N 4th St	Outdoor Storage				1/24/2022
2/2/2022	437 N Main St	Junk Motor Vehicle			2/4/2022	
2/2/2022	156 High St	Foundations, Roofs and Drainage, Exterior of Property, Windows and Doors, Rotting Fesca, Parking in grass			2/4/2022	
		Working on issues				
2/2/2022	1027 Justin Ridge	Fence			2/4/2022	
2/2/2022	982 Brookfield Dr	Fence			2/4/2022	
2/2/2022	599 Chapman St	Roofs and Drainage, Sidewalks and Driveways, Exterior of Premises, Exterior Walls			2/4/2022	
2/2/2022	88 S 3rd St	Windows and Doors, Roofs and Drainage, Exterior of Premises			2/4/2022	
2/2/2022	98 S 3rd St	Roofs and Drainage			2/4/2022	
2/2/2022	70 S 3rd St	Roofs and Drainage			2/4/2022	
2/2/2022	208 S 3rd St	Outdoor Storage, Roofs and Drainage, High Weeds			2/4/2022	
2/2/2022	292-298 Church St	Roof and Drainage			2/4/2022	
2/2/2022	312 N Main St	Outdoor Storage, Junk Motor Vehicle, Roofs and Drainage			2/4/2022	
2/2/2022	195 S 3rd St	Paint, Outdoor Storage, Exterior of Premises			2/4/2022	
2/2/2022	513 High St	Outdoor Storage, Brush Piles, Junk Motor Vehicles			2/4/2022	
2/2/2022	106-108 N 4th St	Outdoor Storage			3/21/2022	
2/2/2022	352 N Main St	Contraction Debris			2/4/2022	
2/2/2022	122 Franklin Rd	Outdoor Storage			2/4/2022	3/13/2022
2/2/2022	637 Franklin Rd	Siding			2/4/2022	
3/13/2022	122 Franklin Rd	Permitless Shed				3/13/2022
3/14/2022	273 Franklin Rd	Curb				3/14/2022
		Spoke with H/O. should be completed this week				3/28/2022
3/21/2022	650 High St	Brush, Outdoor Storage			3/22/2022	
3/21/2022	262 Edwards Dr	Junk Motor Vehicle, Outdoor Storage, Accumulation of Junk			3/22/2022	
3/21/2022	225 Edwards Dr	Outdoor Storage, Accumulation of rubbish or garbage			3/22/2022	
3/21/2022	608 North St	Outdoor Storage, Accumulation of rubbish or garbage			3/22/2022	
3/21/2022	135 N 3rd St	Dead Tree			3/22/2022	
3/21/2022	282 Franklin Rd	Parking in Grass			3/22/2022	
3/28/2022	120 N Main St	Accumulation of rubbish or garbage, Brush			3/29/2022	

